

4

3

2

1

PARTS LIST

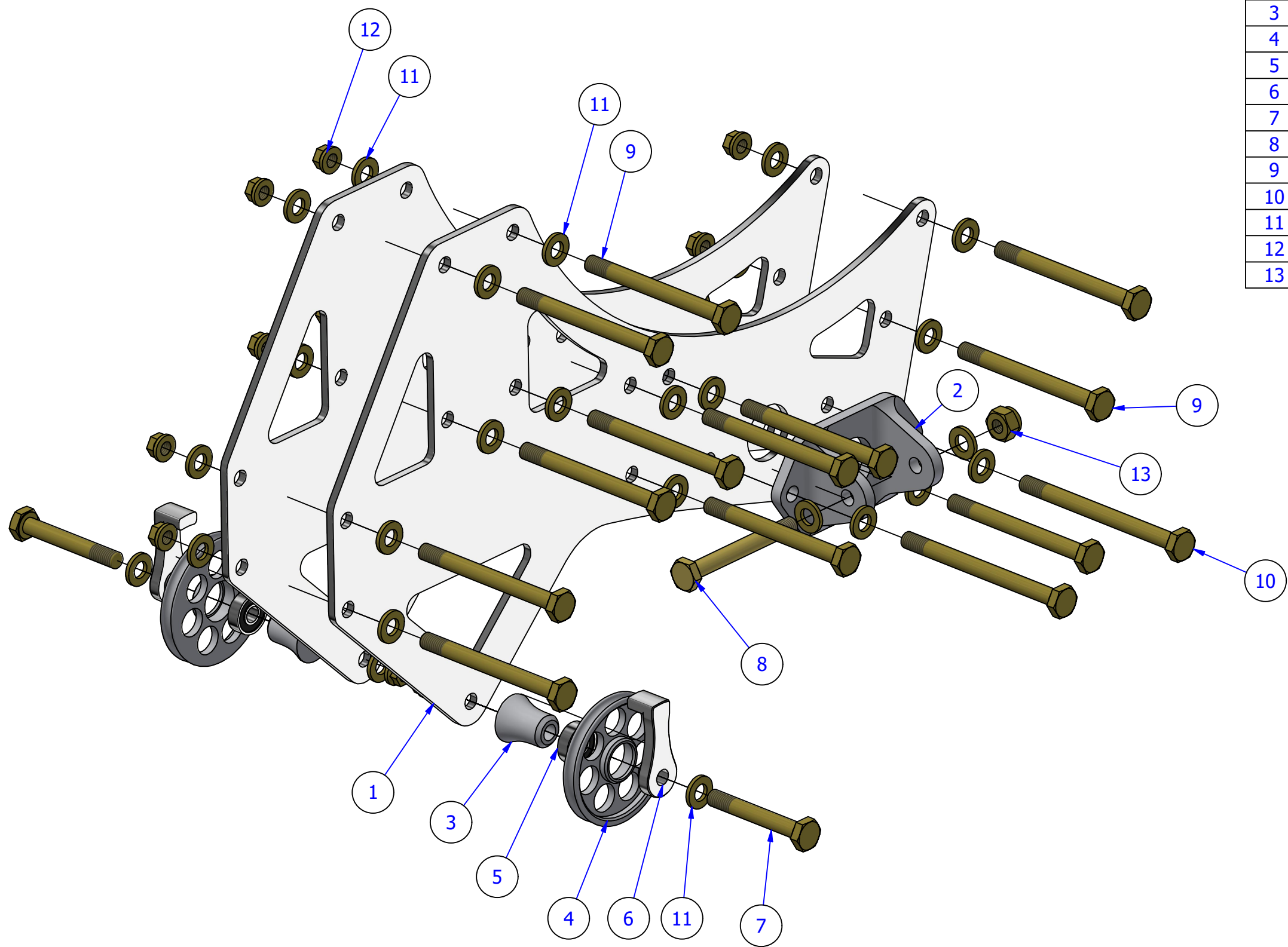
ITEM	QTY	PART NUMBER	DESCRIPTION
1	2	7100-1300	Cluster Plate_Mast Base
2	2	7100-0120	Landing Gear Shackle
3	2	7000-0120	Pulley Stud_Conical
4	2	7000-0320	Cable Pulley A
5	2	R4-2RS	.250 x .625 x .196 Ball Bearing
6	2	7000-0350	Cable Retainer_200
7	2	AN4-16A	1/4"-28 x 1 3/4"
8	2	AN4-21A	1/4"-28 x 2 1/8"
9	12	AN4-25A	1/4"-28 x 2 5/8"
10	2	AN4-30A	1/4"-28 x 3"
11	36	AN960-416	1/4" Flat Washer x .062"
12	16	MS21042-4	1/4"-28 Stop Nut
13	2	AN365-428A	1/4"-28 Nylon Insert Lock Nut

B

B

A

A



2



GYRO TECHNIC
 engineering the power of flight

31196 490th Street, Kasota, MN 56050
 507-933-9033
 sales@gyrotech.com www.gyrotech.com

THIS DRAWING AND THE INFORMATION HEREIN IS THE EXCLUSIVE PROPERTY OF GYRO TECHNIC INC AND IS NOT TO BE REPRODUCED OR USED TO MANUFACTURE ITEMS FOR USE OR SALE BY ANY OTHER PERSON OR CONCERN WITHOUT THE WRITTEN PERMISSION OF GYRO TECHNIC INC.

PART NAME:

PART NUMBER:
Lower Cluster Assy VX1

4

3

2

1