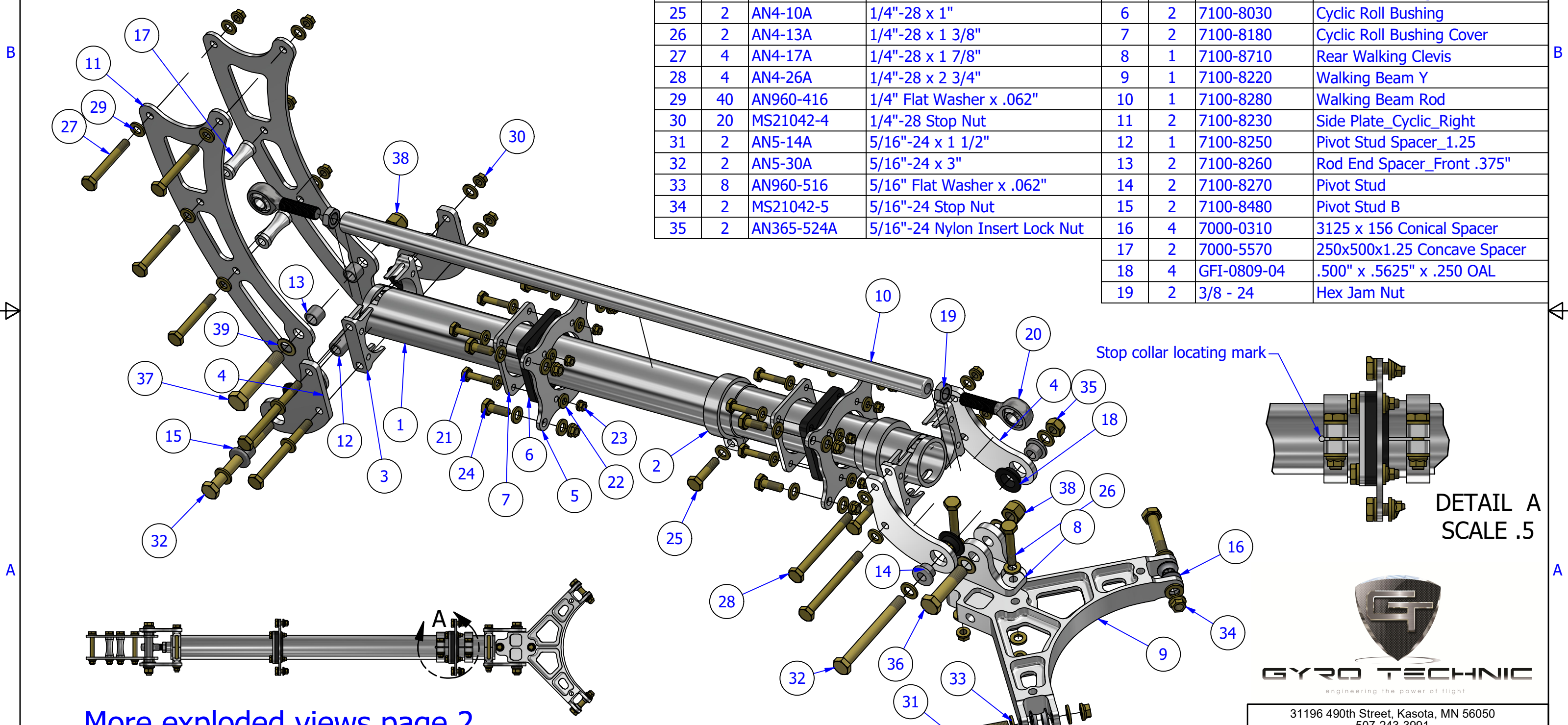


PARTS LIST			
ITEM	QTY	PART NUMBER	DESCRIPTION
36	1	AN6-14A	3/8"-24 x 1 1/2"
37	1	AN6-20A	3/8"-24 x 2"
38	2	AN365-624A	3/8"-24 Nylon Insert Lock Nut
39	4	AN960-616L	3/8" Flat Washer x .031"

PARTS LIST			
ITEM	QTY	PART NUMBER	DESCRIPTION
20	2	XMR6 QA-1	3/8" Chromoly Rod End
21	8	AN3-7A	10-32 x 7/8"
22	16	AN960-10	#10 Flat Washer x .062"
23	8	MS21042-3	10-32 Stop Nut
24	8	AN4-5A	1/4"-28 x 5/8"
25	2	AN4-10A	1/4"-28 x 1"
26	2	AN4-13A	1/4"-28 x 1 3/8"
27	4	AN4-17A	1/4"-28 x 1 7/8"
28	4	AN4-26A	1/4"-28 x 2 3/4"
29	40	AN960-416	1/4" Flat Washer x .062"
30	20	MS21042-4	1/4"-28 Stop Nut
31	2	AN5-14A	5/16"-24 x 1 1/2"
32	2	AN5-30A	5/16"-24 x 3"
33	8	AN960-516	5/16" Flat Washer x .062"
34	2	MS21042-5	5/16"-24 Stop Nut
35	2	AN365-524A	5/16"-24 Nylon Insert Lock Nut

PARTS LIST			
ITEM	QTY	PART NUMBER	DESCRIPTION
1	1	7100-8050	Outer Tube_Walking Beam
2	2	7100-8200	Stop Collar_Walking Beam Tube
3	4	7100-8020	Roll Clamp Block A
4	4	7100-8010	Roll_Side Plate A
5	2	7100-8160	Rotation Bushing Plate
6	2	7100-8030	Cyclic Roll Bushing
7	2	7100-8180	Cyclic Roll Bushing Cover
8	1	7100-8710	Rear Walking Clevis
9	1	7100-8220	Walking Beam Y
10	1	7100-8280	Walking Beam Rod
11	2	7100-8230	Side Plate_Cyclic_Right
12	1	7100-8250	Pivot Stud Spacer_1.25
13	2	7100-8260	Rod End Spacer_Front .375"
14	2	7100-8270	Pivot Stud
15	2	7100-8480	Pivot Stud B
16	4	7000-0310	3125 x 156 Conical Spacer
17	2	7000-5570	250x500x1.25 Concave Spacer
18	4	GFI-0809-04	.500" x .5625" x .250 OAL
19	2	3/8 - 24	Hex Jam Nut



More exploded views page 2

PART NAME:

PART NUMBER:  
Walking Beam Cyclic



31196 490th Street, Kasota, MN 56050  
507-243-3991  
sales@gyrotech.com www.gyrotech.com  
THIS DRAWING AND THE INFORMATION HEREIN IS THE EXCLUSIVE PROPERTY OF GYRO TECHNIC INC AND IS NOT TO BE REPRODUCED OR USED TO MANUFACTURE ITEMS FOR USE OR SALE BY ANY OTHER PERSON OR CONCERN WITHOUT THE WRITTEN PERMISSION OF GYRO TECHNIC INC.