

PARTS LIST			
ITEM	QTY	PART NUMBER	DESCRIPTION
1	2	7100-1470	Pod Pedestal_Side Plate
2	2	7100-1460	Pod Mount Angle
3	4	7100-8150	Clamp Plate_2.270
4	1	7100-1530	Instrument Panel Conduit
5	2	7100-2900	Pedal Mount_Inst - Front
6	1	7100-0170	Pivot Tube_Rudder Pedal
7	2	7100-2330	Link Pivot Stop Collar
8	2	7100-1090	Foot Pedal Stop Collar_Inside
9	6	7000-0160	250 x 500 x 2 Concave Spacer
10	2	7100-1450	Pod Conduit Clamp
11	2	7100-4130	Front Pulley Bracket
12	2	7000-0120	Pulley Stud_Conical
13	2	7000-0320	Cable Pulley A
14	2	7000-0350	Cable Retainer_200
15	2	R4-2RS	.250 x .625 x .196 Ball Bearing
16	4	AN3-13A	10-32 x 1 3/8"
17	2	AN3-14A	10-32 x 1 1/2"
18	12	AN960-10	#10 Flat Washer x .062"
19	6	MS21042-3	10-32 Stop Nut
20	4	AN4-5A	1/4"-28 x 5/8"
21	4	AN4-6A	1/4"-28 x 3/4"
22	2	AN4-33A	1/4"-28 x 3 3/8"
23	5	AN4-25A	1/4"-28 x 2 5/8"
24	4	AN4-30A	1/4"-28 x 3"
25	2	AN4-16A	1/4"-28 x 1 3/4"
26	38	AN960-416	1/4" Flat Washer x .062"
27	4	AN960-416L	1/4" Flat Washer x .031"
28	21	MS21042-4	1/4"-28 Stop Nut

PART NAME:
Instrument Pod Riser

PART NUMBER:
Instrument Pod Riser



31196 490th Street, Kasota, MN 56050
507-243-3991
sales@gyrotech.com www.gyrotech.com
THIS DRAWING AND THE INFORMATION HEREIN IS THE EXCLUSIVE PROPERTY OF GYRO TECHNIC INC AND IS NOT TO BE REPRODUCED OR USED TO MANUFACTURE ITEMS FOR USE OR SALE BY ANY OTHER PERSON OR CONCERN WITHOUT THE WRITTEN PERMISSION OF GYRO TECHNIC INC.

4

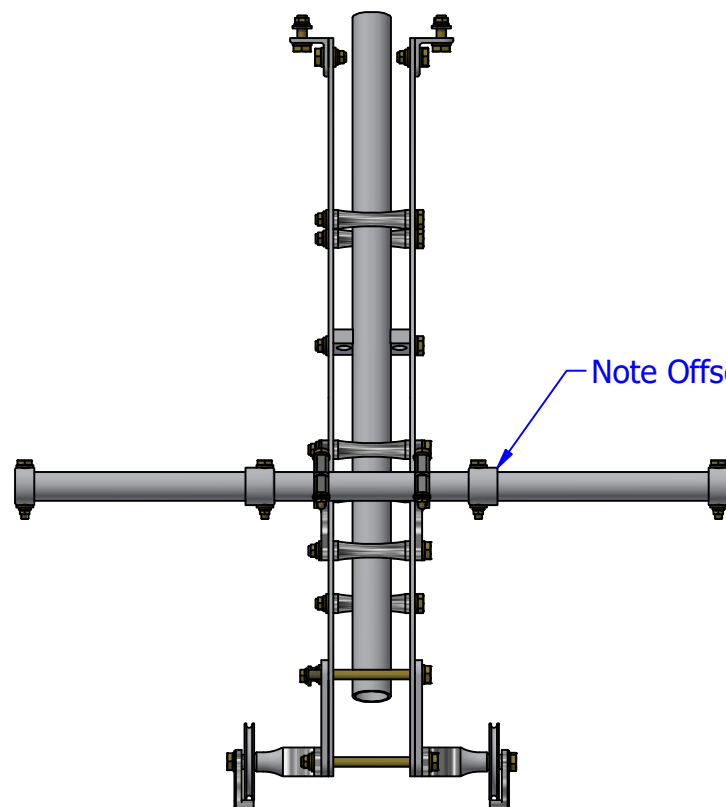
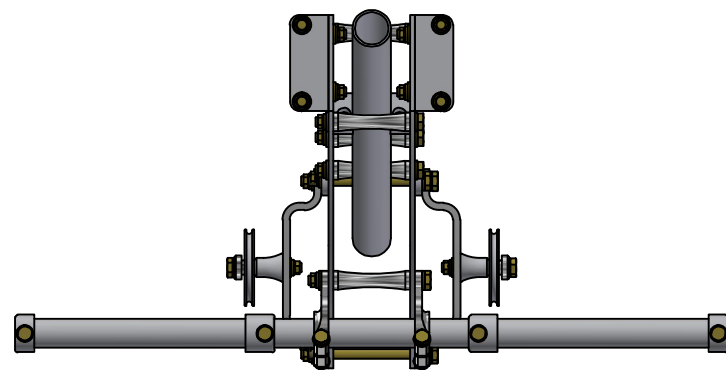
3

2

1

B

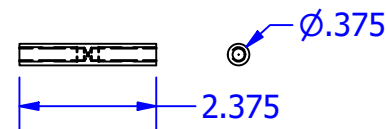
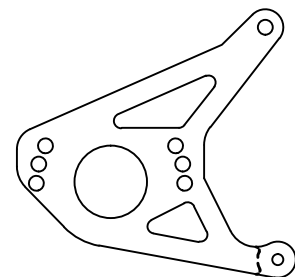
B



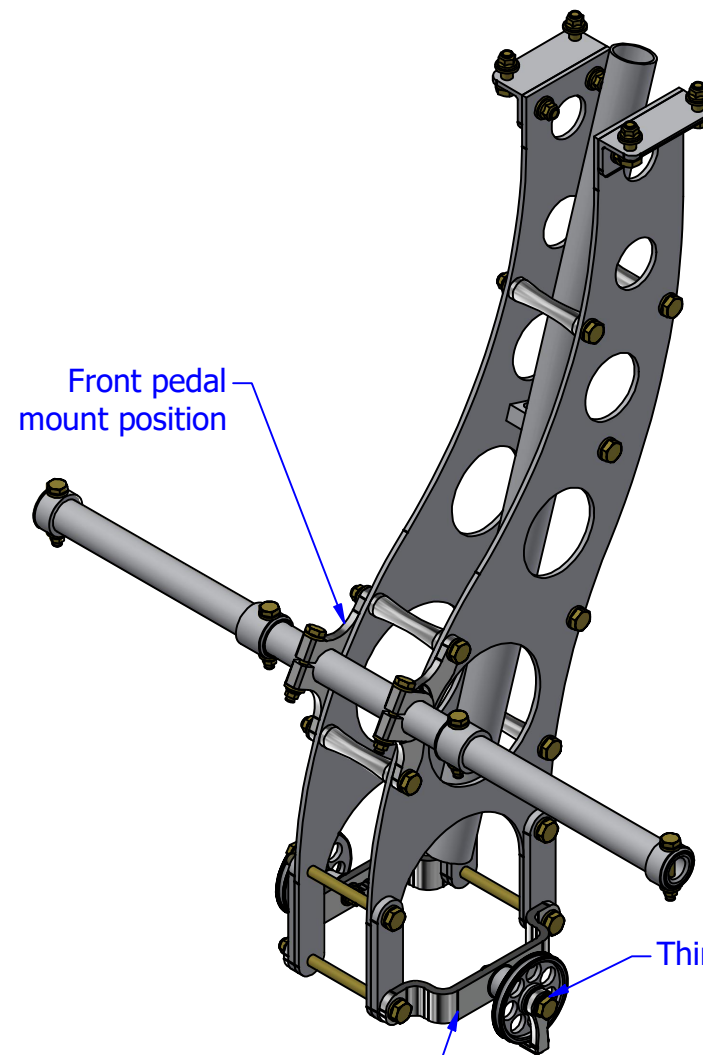
Note Offset

A

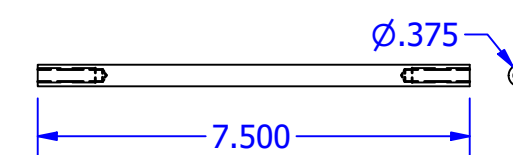
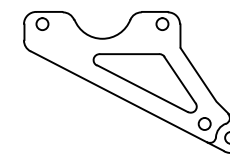
A



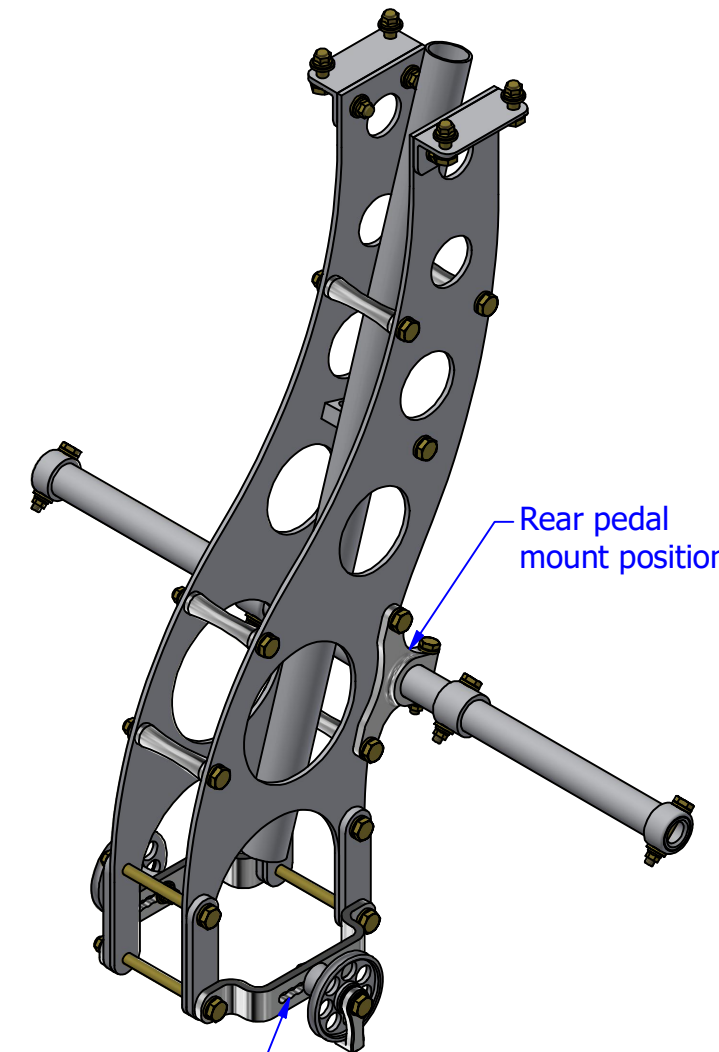
For front-mounted pedals:



Pulley adjustments to rear



For rear-mounted pedals:



Pulley adjustments to front

Mount position from front of keel tube
3.250

PART NAME:
Instrument Pod Riser

PART NUMBER:
Instrument Pod Riser



GYRO TECHNIC
engineering the power of flight

31196 490th Street, Kasota, MN 56050
507-243-3991
sales@gyrotech.com www.gyrotech.com

THIS DRAWING AND THE INFORMATION HEREIN IS THE EXCLUSIVE PROPERTY OF GYRO TECHNIC INC AND IS NOT TO BE REPRODUCED OR USED TO MANUFACTURE ITEMS FOR USE OR SALE BY ANY OTHER PERSON OR CONCERN WITHOUT THE WRITTEN PERMISSION OF GYRO TECHNIC INC.

4

3

2

1

