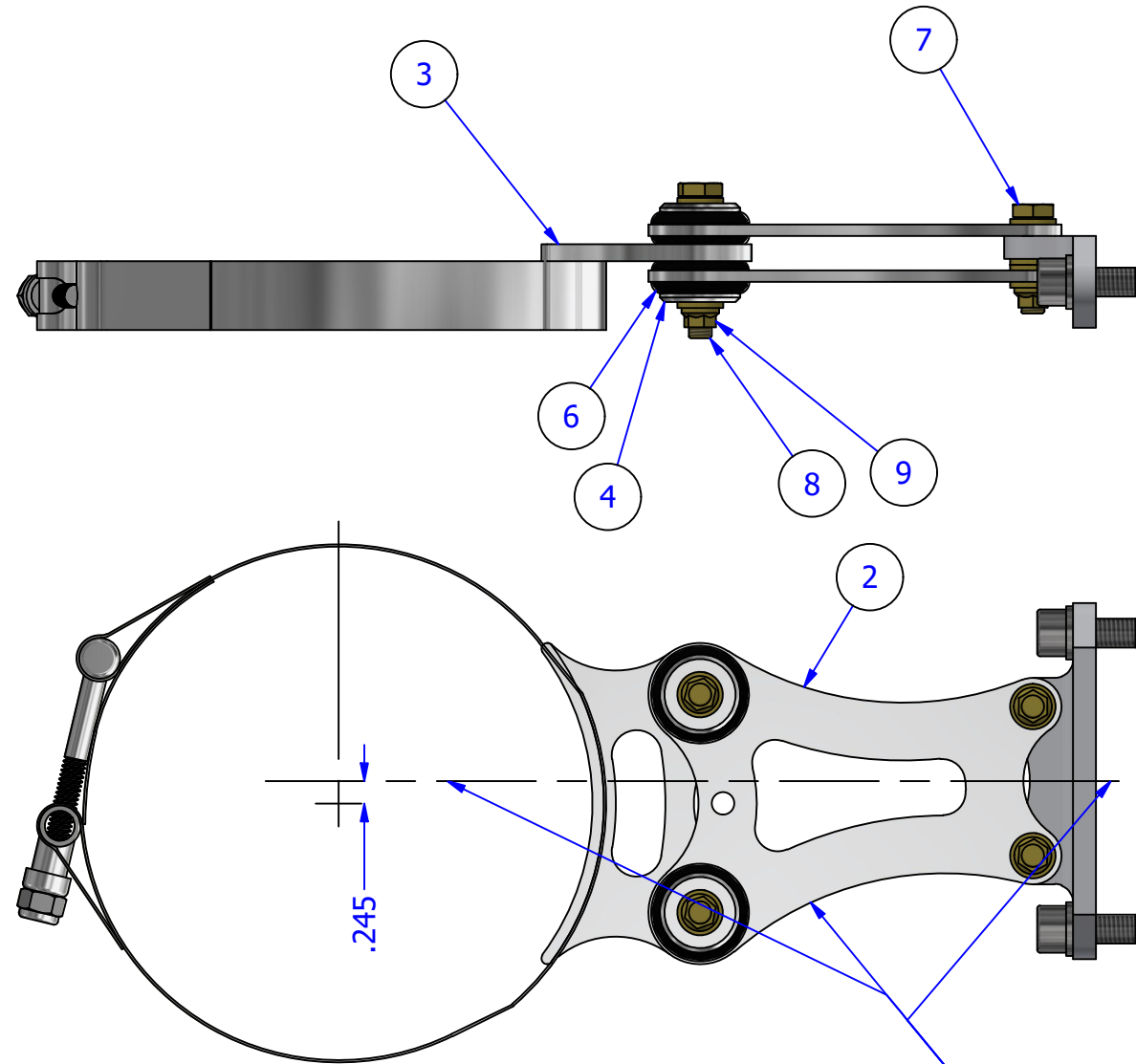


See page 2 for exploded view



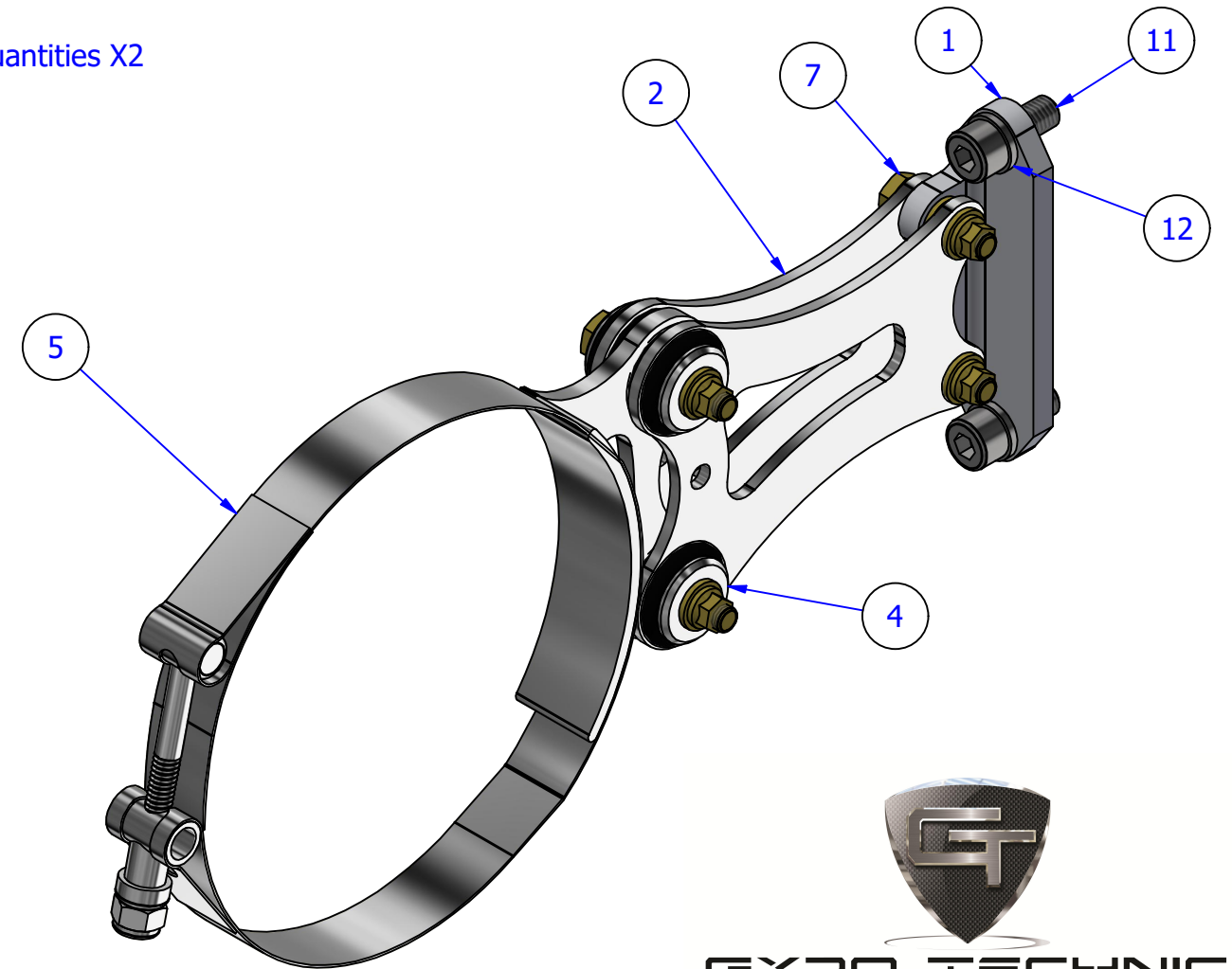
Note Offset in Plates
Center of exhaust canister is about 1/4" lower than the center of the bracket

PART NAME:
Exhaust Bracket B_Rotax

PARTS LIST

ITEM	QTY	PART NUMBER	DESCRIPTION
1	1	7000-1270	Bracket A_ Exhaust 582
2	2	7000-1170	Grommet Plate B_ Exhaust (6.625" Manifold)
3	1	7000-0490	Canister Cradle
4	4	7000-0430	Exhaust Grommet Sleeve
5	1	5204K180	Band Clamp_ Exhaust
6	4	9307K27	.500" x .8125" x 1.0625" x 1/8" Grommet
7	2	AN4-10A	1/4"-28 x 1"
8	2	AN4-14A	1/4"-28 x 1 1/2"
9	4	MS21042-4	1/4"-28 Stop Nut
10	12	AN960-416	1/4" Flat Washer x .062"
11	2	M8x1.25 x 20	Broached Socket Head Cap Screw - Metric
12	2	M8 Lock Washer	Helical Spring Lock Washers

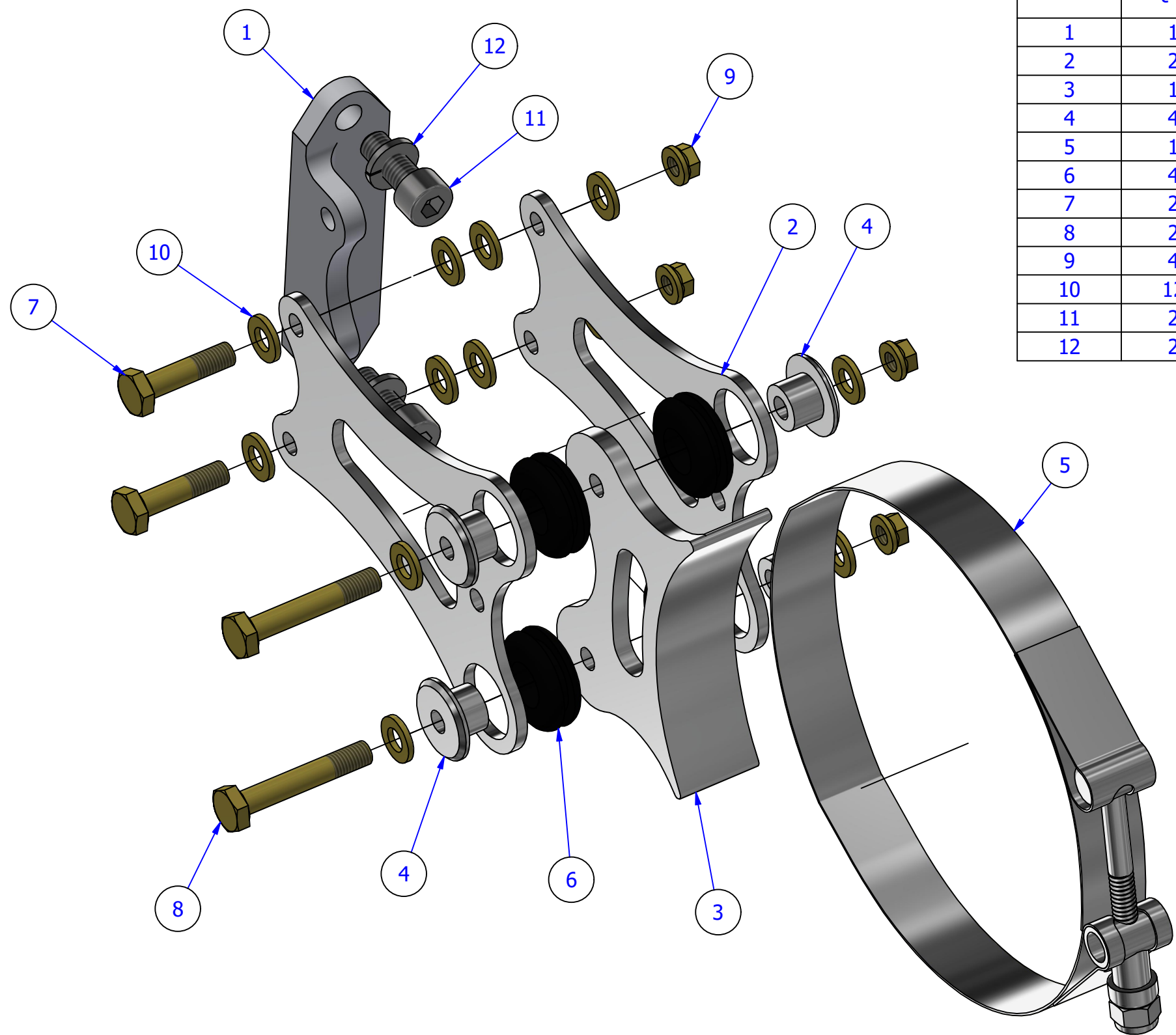
Quantities X2



31196 490th Street, Kasota, MN 56050
507-243-3991
sales@gyrotechnic.com www.gyrotechnic.com

THIS DRAWING AND THE INFORMATION HEREIN IS THE EXCLUSIVE PROPERTY OF GYRO TECHNIC INC AND IS NOT TO BE REPRODUCED OR USED TO MANUFACTURE ITEMS FOR USE OR SALE BY ANY OTHER PERSON OR CONCERN WITHOUT THE WRITTEN PERMISSION OF GYRO TECHNIC INC.

PART NUMBER:
Exhaust Bracket B_Rotax



PARTS LIST			
ITEM	QTY	PART NUMBER	DESCRIPTION
1	1	7000-1270	Bracket A_ Exhaust 582
2	2	7000-1170	Grommet Plate B_ Exhaust (6.625" Manifold)
3	1	7000-0490	Canister Cradle
4	4	7000-0430	Exhaust Grommet Sleeve
5	1	5204K180	Band Clamp_ Exhaust
6	4	9307K27	.500" x .8125" x 1.0625" x 1/8" Grommet
7	2	AN4-10A	1/4"-28 x 1"
8	2	AN4-14A	1/4"-28 x 1 1/2"
9	4	MS21042-4	1/4"-28 Stop Nut
10	12	AN960-416	1/4" Flat Washer x .062"
11	2	M8x1.25 x 20	Broached Socket Head Cap Screw - Metric
12	2	M8 Lock Washer	Helical Spring Lock Washers

PART NAME:
Exhaust Bracket B_Rotax

PART NUMBER:
Exhaust Bracket B_Rotax



31196 490th Street, Kasota, MN 56050
507-243-3991
sales@gyrotech.com www.gyrotech.com
THIS DRAWING AND THE INFORMATION HEREIN IS THE EXCLUSIVE PROPERTY OF GYRO TECHNIC INC AND IS NOT TO BE REPRODUCED OR USED TO MANUFACTURE ITEMS FOR USE OR SALE BY ANY OTHER PERSON OR CONCERN WITHOUT THE WRITTEN PERMISSION OF GYRO TECHNIC INC.